



M E M O R A N D U M

TO: Terry Martino
FROM: Planning Staff
DATE: December 2, 2013
SUBJECT: Highlights of Planning Division Activities for
November 2013

STATE LAND and UMP REVIEW ACTIVITIES

State land and RASS staff are reviewing a JIF for the Lake George Million Dollar Beach parking area.

Kathy Regan attended the 8th Alpine Gathering in Keene, New Hampshire where she received the Guy Waterman Alpine Stewardship Award. The focus of the conference was on the response of alpine habitat to climate change.

Staff worked with DEC on the Hurricane Mountain and St. Regis Mountain Historic Area UMP presentations for the November Agency meeting.

Staff continued working on the FSEIS for the 2013 Classification package.

State land staff met with DEC, DOT and ORDA regarding the reconstruction of the Whiteface Memorial Highway.

State land staff completed historic resource reviews for several projects as part of the NYS Historic Preservation Act in the following locations: the Town of Bolton, Town of Ticonderoga, and the Town of Lewis.

State land staff met with representatives from the Adirondack Powder Skier Association, DEC, Adirondack Council, and Adirondack Wild to discuss and review backcountry skiing opportunities on the Adirondack Forest Preserve.

Staff participated in online presentation regarding the Final Accessibility Guidelines for Outdoor Developed Areas.

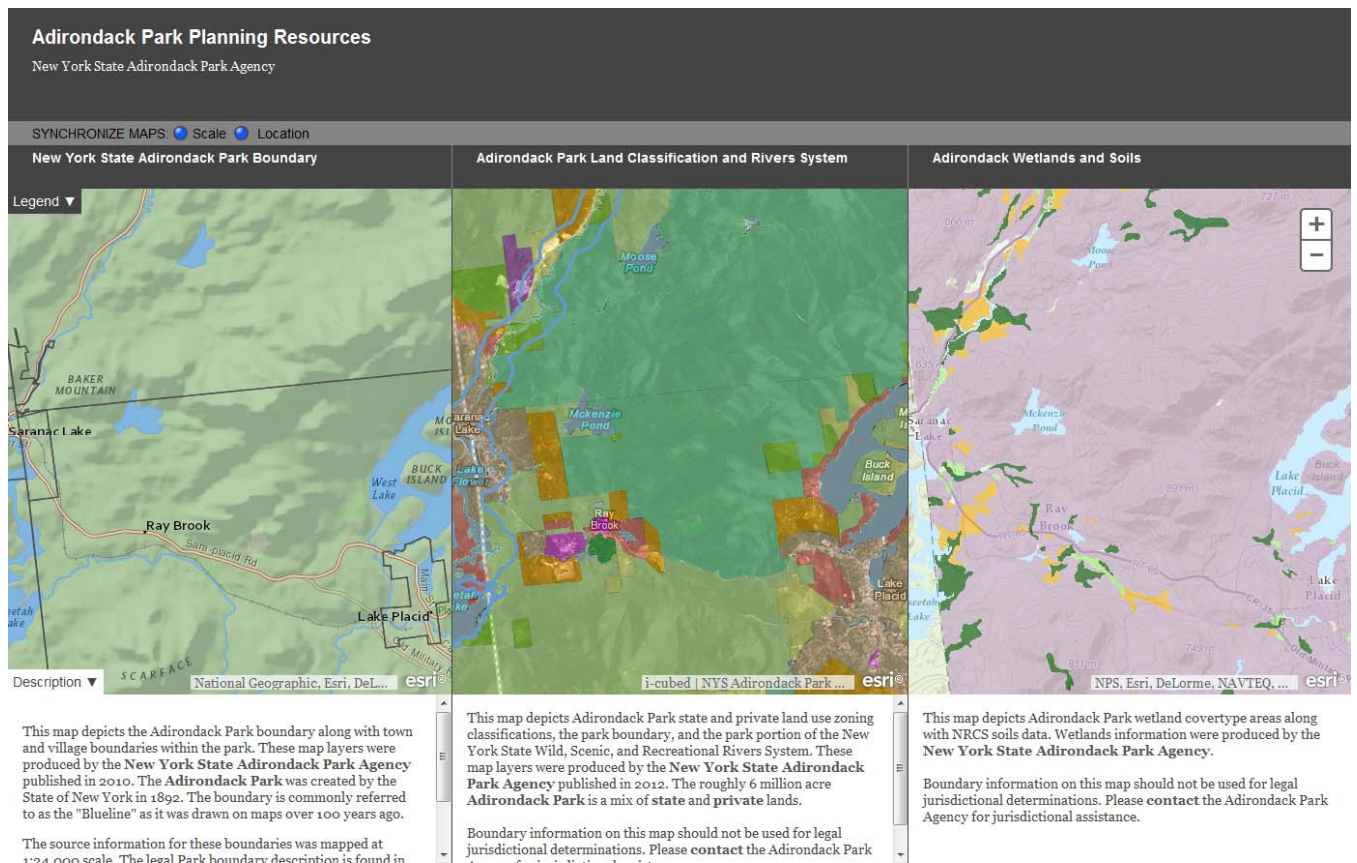
State land staff worked on GIS analysis regarding snowmobile trail location in the Vanderwhacker Mt. Wild Forest.

State land staff worked with DEC staff regarding proposed snowmobile trail in the Black River Wild Forest including field work and GIS analysis.

State land staff met regarding unit management planning for the Camp Santanoni Historic Area.

CARTOGRAPHY AND INFORMATION ANALYSIS

GIS Agency Program Administration/GIS Hardware/Software Management/ Data Management, Training - Staff began testing and developing the Agency's use of ArcGIS Online as a method for publishing Agency GIS maps and content online. Examined costs, data security, functionality and usability of publishing our content online.



GIS Consultation/LUA Boundary/Blue Line Inquiry - Staff met with State Lands staff to discuss the Camp Santanoni Historic boundary as delineated in Agency GIS data and on various hardcopy maps and memoranda.

GIS Training/GIS Agency Program Administration - John Barge attended the 29th annual New York State GIS Conference (NYGeoCon 2013) on November 12th & 13th in Saratoga Springs. Barge was on the Conference Planning Committee and facilitated two user presentation sessions. Approximately 325 people attended. Barge, along with John Banta, attended the first annual conference back in 1986. Participation registration fee was paid for by PEF/GOER contract agreement.

GIS Agency Program Administration/GIS Training - John Barge and Matt Kendall attended an online webex meeting November 18th with GIS technical staff from the state Energy and Environment IT cluster. Esri software (our GIS vendor) license management was discussed.

GIS Data Management/GIS Consultation - Staff assisted Legal staff with three JIF mapping problems.

GIS Data Management/GIS Consultation - Staff assisted Regulatory Program staff with P2013-0239 mapping problems.

Web Administration - Staff assisted Local Government Services staff with website editing issues.

Web Content Management - Staff facilitated the posting of monthly mailing content. Staff posted the 2014 monthly meeting schedule and managed/deleted mailing content older than two years from the Agency's off-site Internet Service Provider.

Administrative Tasks - Staff prepared monthly reports.

Administrative Tasks - Staff managed email archives.

November GIS/Web Task Summary:

Task	Count
GIS Agency Program Administration	3
GIS Consultation	3
GIS Hardware/Software Management	1
GIS Map Production	0
GIS Data Management	3
GIS Training	2
LUA Boundary/Blue Line Inquiry	1
Map Amendments Review	0
State Land Classification/Reclassification Review	0
Web Administration	1
Web Content Management	2
Administrative Tasks	2